



# Country Heritage Park

## 2022 Wedding Package







# Welcome

TO THE HIDDEN GEM IN MILTON, ONTARIO  
SINCE 1974. SITUATED ON 80 BREATHTAKING  
ACRES CREATING THE PERFECT BACKDROP WITH ITS  
UNIQUE PHOTOGRAPHIC LANDSCAPES INCLUDING  
THE NIAGARA ESCARPMENT, HISTORIC BARNs, HOUSES AND  
BUILDINGS ALL IN ONE LOCATION.

FEATURED ARE OUR TWO UNIQUE RECEPTION VENUES  
THAT OFFER COMPLETELY DIFFERENT ELEMENTS AND  
ATMOSPHERES TO ANY WEDDING.

## THE GAMBREL BARN

ALTHOUGH IT IS A TRADITIONAL LOOKING BARN FROM THE OUTSIDE, ONCE INSIDE THIS POST AND  
BEAM STRUCTURE SURROUNDS YOU WITH THE WARMTH OF ITS RECLAIMED WOOD, SIMPLE ELEGANCE  
AND ITS OVERWHELMING NATURAL BEAUTY. CAREFULLY LIT HEWN BEAMS AND STRUNG TWINKLE  
LIGHTS CREATE THE PERFECT ATMOSPHERE FOR ANY EVENT. THIS BARN'S UNIQUE NAME REFLECTS  
THE ROOF STYLE AND WAS CONSTRUCTED AS A BICENTENNIAL PROJECT BACK IN 1984.

## THE CARRIAGE HOUSE

A ONE-OF-A KIND BUILDING WHERE CLASSIC MEETS ELEGANCE. AN ALL-WOOD  
BUILDING CONSTRUCTED WITH LARGE BARN DOORS, OFFERING A PERFECT GRAND ENTRANCE  
INTO ITS UNIQUE OPEN ROOF CONCEPT ALLOWING THE ELEMENTS OF NATURE TO BE FELT  
THROUGHOUT THE EVENT. ONCE THE SUN SETS AND NIGHTTIME BEGINS, THE BUILDING IS  
ILLUMINATED BY THE COUNTRY'S NIGHTTIME SKY, AND STRUNG TWINKLE LIGHTS  
ENHANCE NATURE'S NATURAL BEAUTY.

## OUR GOAL

TO CREATE LONG LASTING MEMORIES IN AN  
UNPARALLELED ATMOSPHERE FOR YOU AND YOUR  
GUESTS THROUGH COMMUNICATION WITH OUR  
EVENT COORDINATORS AND PREFERRED CATERERS.





# General Information

## PEAK RATES

MAY - DECEMBER | FRIDAY & SATURDAY  
STATUTORY & CIVIC HOLIDAYS

## OFF-PEAK RATES

JANUARY - APRIL | SUNDAY - SATURDAY  
MAY - DECEMBER | SUNDAY - THURSDAY

\*ALL RATES ARE HST EXEMPT\*

## SAVE THE DATE

RESERVATIONS ARE ACCEPTED ON A FIRST-COME, FIRST-SERVED BASIS. UPON THE SIGNING OF A CONTRACT, A DATE WILL BE HELD FOR ONE WEEK AT WHICH TIME THE CONTRACT MUST BE RETURNED WITH A 50% DEPOSIT.

## VENUE ACCESS

COUPLES, EXTERNAL VENDORS AND GUESTS WILL HAVE ACCESS TO THE BOOKED RECEPTION VENUE AS OF 9:00 A.M. ON THE DAY OF THE BOOKING UP UNTIL 2:00 A.M. CEREMONY SITE ACCESS TIME TO BE CLARIFIED.

## COORDINATION SERVICES

COUPLES WILL HAVE A DESIGNATED COUNTRY HERITAGE PARK VENUE COORDINATOR TO ASSIST WITH:

- ALL PLANNING NECESSITIES PERTAINING TO THE VENUE ITSELF
- A WEDDING OUTLINE AND FLOOR PLAN FOR BOTH YOUR CEREMONY AND VENUE LOCATIONS
- CATERING TIMELINES AND EVENT DETAILS
- PRESENCE BRIEFLY DAY OF TO ENSURE EVERYTHING IS SET ACCORDINGLY

\*ALTHOUGH WE PROVIDE A VENUE COORDINATOR, WE STRONGLY ADVISE OUR CLIENTS LOOK INTO A WEDDING COORDINATOR TO ASSIST WITH 'DAY OF' WEDDING CO-ORDINATIONS AND TIMELINES\*

## CATERING

COUNTRY HERITAGE PARK IS PLEASED TO PROVIDE HIGHLY SELECTED PREFERRED CATERERS TO CHOOSE FROM THAT OFFER A VARIETY OF DIFFERENT PRICE POINTS AND FOOD SELECTIONS FROM TRADITIONAL WESTERN FOODS TO SOUTH ASIAN CUISINE.

\*WE REQUIRE OUR CLIENTS TO BOOK WITH ONE OF OUR PREFERRED CATERERS.\*

## EXTERNAL VENDORS

ASIDE FROM THE CATERER, WE OFFER YOU THE FLEXIBILITY TO BRING IN EXTERNAL VENDORS PERTAINING TO OTHER EVENT NECESSITIES SUCH AS, DECOR, FLORAL, AUDIO/VISUAL, PHOTOGRAPHY/VIDEOGRAPHY, ENTERTAINMENT, ETC.

## PARKING

AMPLE FREE PARKING AVAILABLE. IF WE HAVE TWO EVENTS BOOKED, A SEPARATE LOT WILL BE DESIGNATED TO EACH LOCATION. VEHICLES ARE PERMITTED TO REMAIN OVERNIGHT HOWEVER MUST BE PICKED UP THE FOLLOWING DAY BETWEEN 9:00 A.M. - 12:00 P.M.



# F.A.Q' S

**ADDITIONAL FEES PAID TO COUNTRY HERITAGE PARK**  
 BESIDES YOUR CEREMONY AND/OR RECEPTION RENTAL  
 THE FOLLOWING ARE ADDITIONAL FEES:

- BAR PACKAGE
- SOCAN TARIFF MUSIC LICENSE FEE | VISIT [WWW.SOCAN.CA](http://WWW.SOCAN.CA)
- TRACTOR WAGON RIDE | FEE: \$175/HR. | \$350/ 3HR. (OPTIONAL)

## REHEARSALS

WEDDING REHEARSALS CAN BE ARRANGED FOR THE DAY OF THE EVENT DURING THE CONTRACTED VENUE ACCESS TIME AND NOT PRIOR TO EVENT DATE.

## BRIDAL SUITE

THE HISTORIC PUSLINCH TOWN HALL IS A PERFECT BRIDAL SUITE AND IS CONVENIENTLY LOCATED NEXT TO THE GAMBREL BARN. BUILT IN 1867, THIS BUILDING OFFERS PLENTY OF NATURAL LIGHT FOR GETTING READY PHOTOS, AMPLE SPACE FOR HAIR AND MAKEUP STATIONS, AS WELL AS A SMALL KITCHENETTE AND WASHROOMS.

RENTAL FEE: \$175/HR. (MINIMUM 2 HR. RENTAL)

CAPACITY: 60 PEOPLE

## PHOTOGRAPHY / DRONES

- DAY OF, CLIENTS HAVE ACCESS TO THE PICTURE PERFECT 80 ACRES AND EXTERIOR OF ALL HISTORIC BUILDINGS UNLESS OTHERWISE RESTRICTED DUE TO A SECONDARY EVENT.
- PHOTOGRAPHY PRIOR TO EVENT DATE CAN BE ARRANGED BY AN APPOINTMENT. FEE: \$200/HR.
- NONE OF OUR HERITAGE BUILDINGS WILL BE OPEN FOR INDOOR PHOTOGRAPHY.
- DRONES ARE NOT ALLOWED TO BE FLOWN ANYWHERE ON OUR PROPERTY AS WE ARE CONSIDERED TO BE IN A FLIGHT PATH FOR TORONTO PEARSON INTERNATIONAL AIRPORT. FINES WILL BE ISSUED.

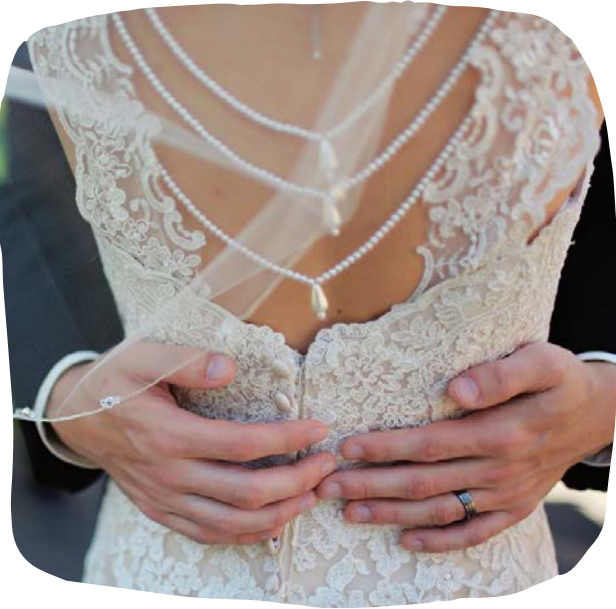
## DECORATION RESTRICTIONS

- OPEN FLAMES SUCH AS CANDLES AND FIRES ARE NOT PERMITTED AT ANY TIME IN ANY OF THE BUILDINGS OR ANYWHERE ON THE PROPERTY. FINES WILL BE ISSUED.
- ANY AND ALL FASTENERS SUCH AS NAILS, STAPLES, SCREWS, TAPE, GLUE, OR ANY OTHER MATERIAL THAT COULD DAMAGE THE FACILITY INCLUDING BUT NOT LIMITED TO THE FLOOR, WALLS, CEILING AND FIXTURES ARE NOT PERMITTED.
- CONFETTI / RICE / FLOWER PETALS / STRAW / HAY ARE NOT PERMITTED AT ANY TIME ANYWHERE ON THE PROPERTY.





# F.A.Q' S Continued



## AUDIO-VISUAL / WI-FI

THE RENTAL OF THE VENUE DOES NOT INCLUDE AUDIO-VISUAL EQUIPMENT OR SERVICES. CLIENTS MAY BRING IN AND OPERATE THEIR OWN EQUIPMENT OR EMPLOY A PROFESSIONAL. SINCE WE ARE A RURAL PROPERTY, WE HAVE LIMITED WI-FI CAPABILITIES AND SUGGEST FOR ALL PRESENTATIONS TO BE DOWNLOADED IN ADVANCE AND UPLOADED TO A USB OR SECONDARY DEVICE.

## SMOKING/VAPING

SMOKING AND/OR VAPING IS NOT PERMITTED THROUGHOUT THE PROPERTY TO COMPLY WITH PROVINCIAL REGULATIONS, WITH THE EXCEPTION OF DESIGNATED SMOKING AREAS.

## ANIMALS

EXCEPT FOR SERVICE DOGS, ANIMALS ARE NOT PERMITTED IN OUR RECEPTION LOCATIONS. CONSIDERATION MAY BE MADE FOR CEREMONY PURPOSES ONLY.

## LIABILITY

COUNTRY HERITAGE PARK HOLDS APPROPRIATE LIABILITY INSURANCE TO HOST EVENTS ON ITS PROPERTY. HOWEVER, WE STRONGLY RECOMMEND THAT CLIENTS PURCHASE THEIR OWN PARTY ALCOHOL LIABILITY (PAL) COVERAGE. VISIT: [WWW.PALCANADA.COM](http://WWW.PALCANADA.COM)

## INCLEMENT WEATHER

IN THE EVENT OF INCLEMENT WEATHER, A CONTINGENCY PLAN WILL BE IN PLACE FOR OUR OUTDOOR CEREMONY SITES. THE BOOKING OF THE CARRIAGE HOUSE DOES NOT HAVE A CONTINGENCY PLAN.

## CANCELLATION POLICY

CANCELLATION OF THE BOOKING BY THE CLIENT WILL RESULT IN FORFEITURE OF ALL AMOUNTS PAID UP UNTIL THE DAY OF CANCELLATION.

## METHODS OF PAYMENT

- VISA
- MASTERCARD
- E-TRANSFER
- PERSONAL CHEQUE
- CASH



# Ceremony Sites

## General Store

### *Rental Fees Include:*

- HOUSE WHITE CHAIRS
- SETUP & TEAR DOWN OF ALL HOUSE ITEMS
- CEDAR RAIL FENCING AROUND SITE
- HYDRO

### *Details:*

- AVAILABLE MAY - SEPTEMBER
- AVAILABLE WITH A GAMBREL BARN RECEPTION ONLY
- CONTINGENCY SITE DUE TO INCLEMENT WEATHER - GAMBREL BARN LOFT
- WHEELCHAIR ACCESSIBLE

### *Rental Fees:*

PEAK - \$800

OFF-PEAK - \$500

### *Capacity:*

160 SEATED



## The Meadow



### *Rental Fees Include:*

- HOUSE WHITE CHAIRS
- SETUP & TEAR DOWN OF ALL HOUSE ITEMS
- HYDRO

### *Details:*

- AVAILABLE MAY - SEPTEMBER
- AVAILABLE WITH A CARRIAGE HOUSE RECEPTION ONLY
- CONTINGENCY SITE DUE TO INCLEMENT WEATHER - THE HARROP BARN
- WHEELCHAIR ACCESSIBLE

### *Rental Fees:*

PEAK - \$800

OFF-PEAK - \$500

### *Capacity:*

150 SEATED



# Ceremony Sites

## Gambrel Loft

### *Rental Fees Include:*

- HOUSE WHITE CHAIRS
- SETUP & TEAR DOWN OF ALL HOUSE ITEMS
- HYDRO

### *Details:*

- AVAILABLE ALL YEAR ROUND
- AVAILABLE WITH A GAMBREL BARN RECEPTION ONLY
- ACCESSIBLE BY STAIRS ONLY

### *Rental Fees:*

PEAK - \$800

OFF-PEAK - \$500

### *Capacity:*

160 SEATED



## Mayne's Corner Church



### *Rental Fees Include:*

- HISTORIC CHURCH PEWS
- HYDRO

### *Details:*

- AVAILABLE YEAR-ROUND FOR RENTAL
- EXCLUSIVE CEREMONY VENUE
- WHEELCHAIR ACCESSIBLE

### *Rental Fees:*

PEAK - \$350

OFF-PEAK - \$350

### *Capacity:*

50 SEATED

# Reception Venues



## Gambrel Barn



### *Rental Fees Include:*

- HOUSE BANQUET 60" ROUND TABLES & CHAIRS
- RECTANGULAR HEAD TABLES
- 21' X 12' STAGE | OPTION OF SECOND TIER
- SETUP & TEAR DOWN OF ALL HOUSE ITEMS
- FOUR WINE BARRELS
- TWO EASELS MADE OF CEDAR
- ON-SITE WASHROOMS
- DROP DOWN SCREEN AND PROJECTOR
- PREP KITCHEN
- HYDRO
- NATURAL GAS HEATING

### *Details:*

- AVAILABLE YEAR-ROUND
- WHEELCHAIR ACCESSIBLE

### *Rental Fees:*

PEAK - \$7,000

OFF-PEAK - \$5,500

### *Capacity:*

280 SEATED

## Carriage House

### *Rental Fees Include:*

- HOUSE BANQUET 60" ROUND TABLES & CHAIRS
- RECTANGULAR HEAD TABLE
- SETUP & TEAR DOWN OF ALL HOUSE ITEMS
- FOUR WINE BARRELS
- TWO EASELS MADE OF CEDAR
- OFF-SITE WASHROOMS
- HYDRO

### *Details:*

- AVAILABLE MAY - SEPTEMBER
- WHEELCHAIR ACCESSIBLE
- NO CONTINGENCY LOCATION DUE TO INCLEMENT WEATHER



### *Rental Fees:*

PEAK - \$4,500

OFF-PEAK - \$3,800

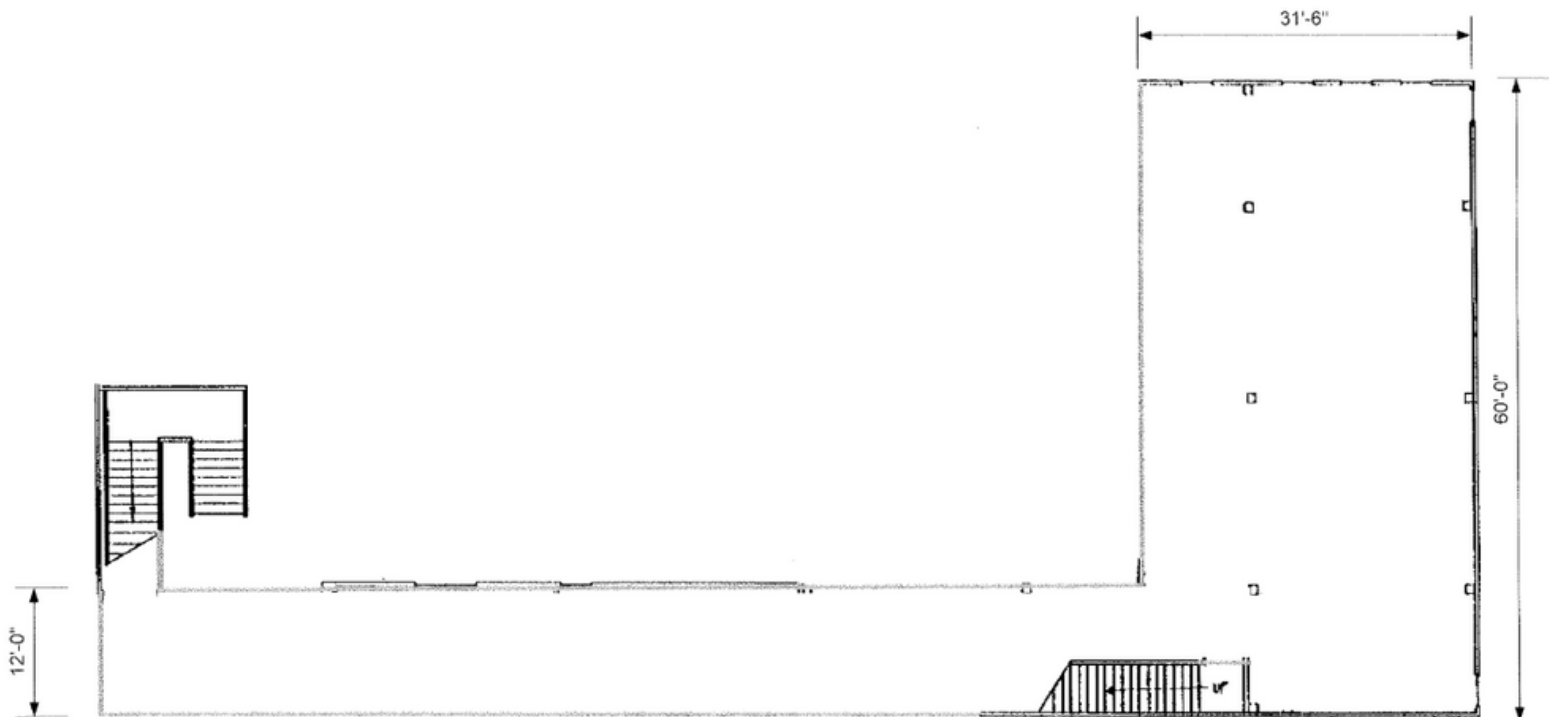
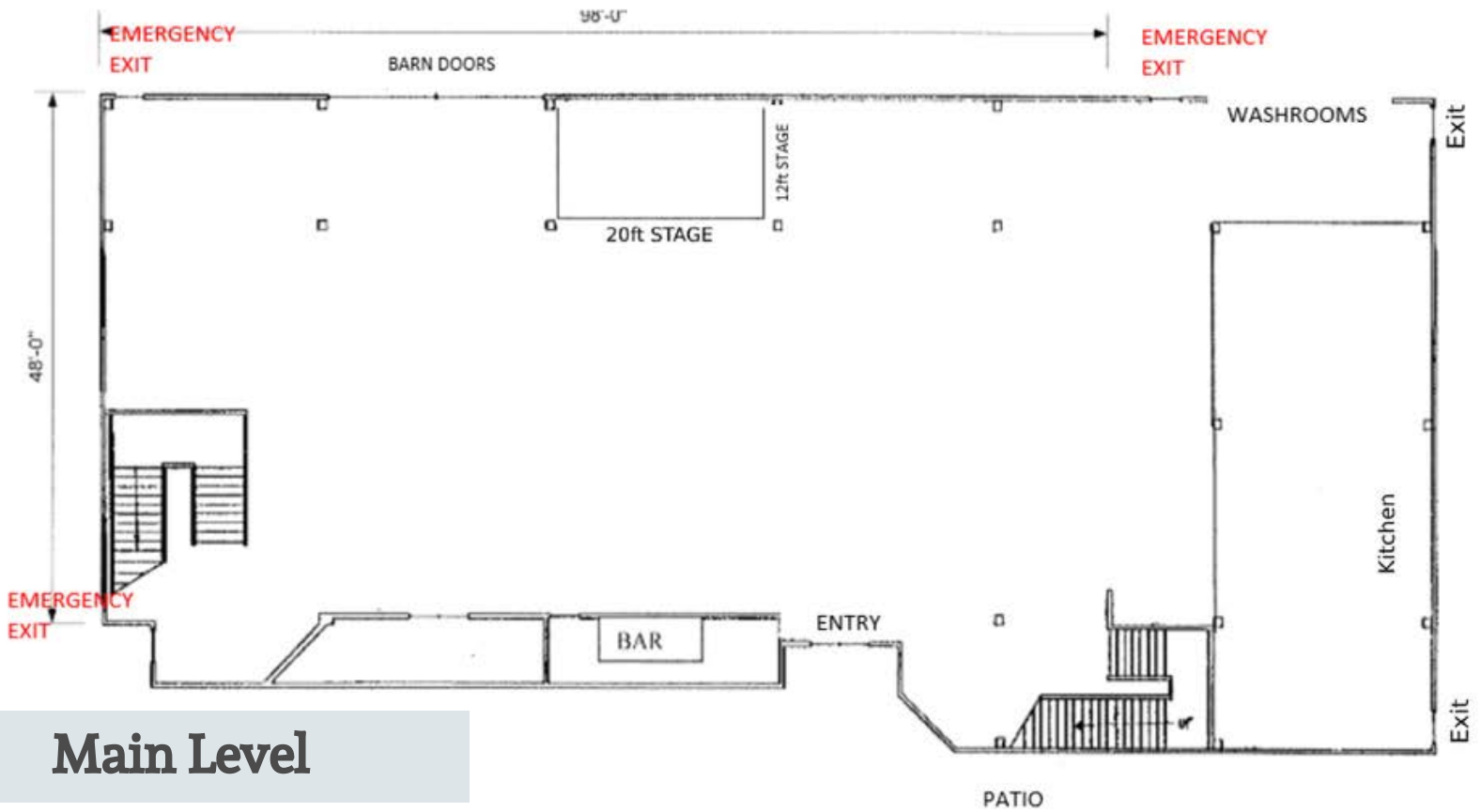
### *Capacity:*

150 SEATED



# Floor Plans

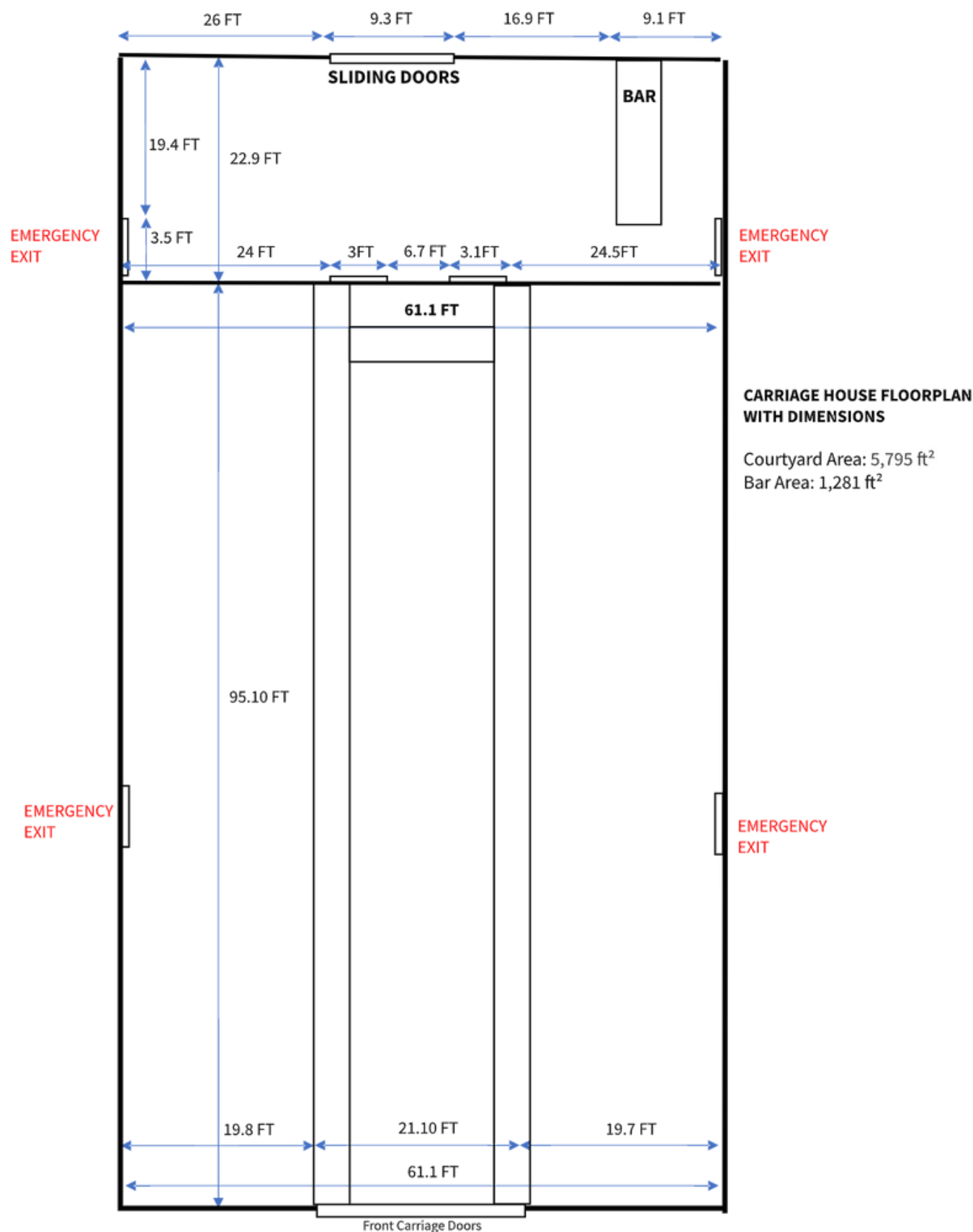
## Gambrel Barn



## Upper Loft

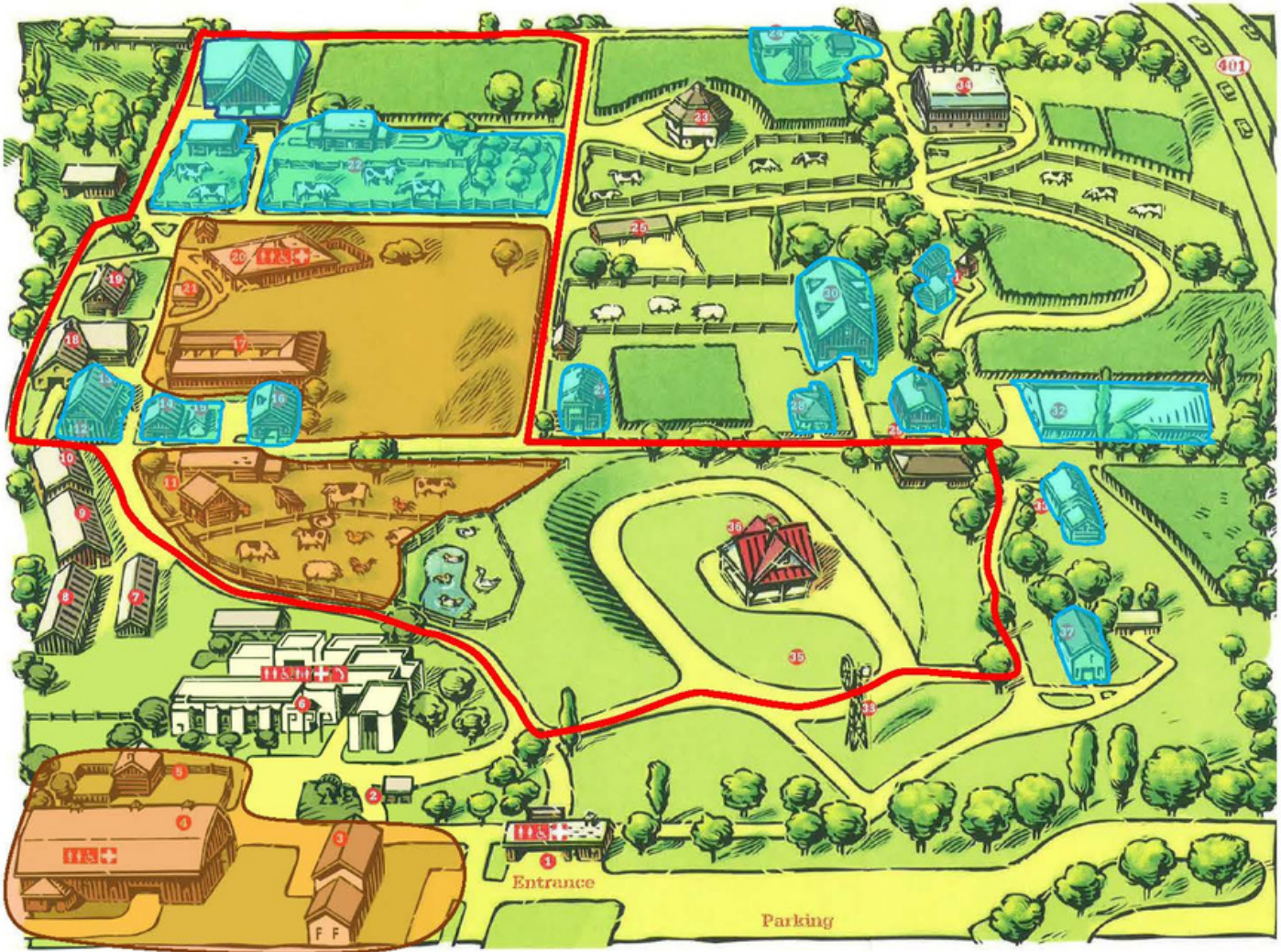
# Floor Plans

## Carriage House





# Photography Locations



ALL WEDDINGS AND EVENTS DAY OF, HAVE ACCESS TO THE PICTURE PERFECT 80 ACRES AND EXTERIOR OF ALL HERITAGE BUILDINGS.

## ORANGE ZONES:

- ACTIVE EVENT AND WEDDING SITES. THESE AREAS MAY BE RESTRICTED DUE TO AN EVENT CONFLICT AND ACCESS IS NOT GUARANTEED. PLEASE INQUIRE ABOUT THESE LOCATIONS PRIOR TO YOUR BOOKING.

## BLUE ZONES:

- POPULAR HISTORIC AND NATURAL SITES
  - MAYNE CORNERS UNITED CHURCH, NASSAGAWEYA SCHOOLHOUSE, MASSEY HARRIS BUILDING, FORD DEALERSHIP, ELLIOTT-HARROP BARN, MOUNTVIEW WOMEN'S INSTITUTE HALL, MCDUFFE IMPLEMENT DEALERSHIP, LUCAS FAMILY HOMESTEAD, POTTER-KINDER BLACKSMITH SHOP, THE HARNESS SHOP

\*NONE OF OUR HISTORIC BUILDINGS WILL BE OPENED FOR INDOOR PHOTOGRAPHY.

## RED LINE:

- INDICATES THE VEHICLE ROUTE/ TRACTOR ROUTE

# Bar Packages

## ALL INCLUSIVE BAR | FEE: \$55.00 PER PERSON

- OPEN BAR FOR A TOTAL OF 6 HRS. | TOTAL BAR HOURS CAN BE SPLIT UP
- CHARGED ON GUEST COUNT OVER 19 YEARS OF AGE
- UNLIMITED NON-ALCOHOLIC DRINKS TO GUESTS UNDER 19 YEARS OF AGE
- INCLUDES 1 BOTTLE OF INNISKILLIN CHARDONNAY AND 1 BOTTLE OF INNISKILLIN CABERNET MERLOT ON EACH TABLE DURING DINNER SERVICE
- REQUIRES A MINIMUM OF 80 GUESTS OVER THE AGE OF 19 YEARS OLD

## CONSUMPTION BAR

- OPEN BAR | BAR TIMELINE IS DECIDED BY THE COUPLE
- BARTENDERS KEEP TRACK OF CONSUMED DRINKS WITH A TALLY SYSTEM
- DEPOSIT REQUIRED IN ADVANCE; \$500 : 50 GUESTS (\$10 PER PERSON)
- PRICES PER DRINK
  - MIXED DRINKS/ CIDER - \$7.00
  - BEER/ WINE - \$6.50
  - NON-ALCOHOLIC - \$2.00

## TICKET / HOST BAR

- COUPLE DECIDES THE NUMBER OF TICKETS FOR EACH GUEST | BAR TIMELINE IS DECIDED BY THE COUPLE
- TICKETS ARE CHARGED IN ADVANCE - \$7.00/ TICKET
- TURNS INTO A CASH BAR ONCE GUEST TICKETS RUN OUT
- FOLLOWING EVENT, TICKETS ARE COLLECTED AND COUNTED

## CASH BAR

- GUESTS ARE CHARGED PER DRINK
  - MIXED DRINKS/ CIDER - \$7.00
  - BEER/ WINE - \$6.50
  - NON-ALCOHOLIC - \$2.00

## NON-ALCOHOLIC BAR | FEE: \$3.00 PER PERSON, PER HOUR

- BAR HOURS DECIDED BY CLIENT
- \$500 MINIMUM BAR CHARGED IN ADVANCE

## ALL BAR PACKAGES INCLUDE

- PURCHASE, SALE, AND SERVICE OF ALCOHOL
- BAR TENDERS 1 : 50 GUESTS
- CLEAR PLASTIC BAR WARE ONLY

## BAR DETAILS

- SERVICE TIME | 1:00 P.M. - 1:00 A.M.
- LAST CALL | 12:30 A.M.
- ALCOHOLIC SHOTS ARE NOT PERMITTED AT ANY TIME
- PREMIUM ALCOHOL BRANDS AVAILABLE UPON REQUEST FOR ADDITIONAL COSTS

## House Alcohol

### BEER / CIDER

- MOLSON CANADIAN
- COORS ORIGINAL
- BUD LIGHT
- FRASER'S CIDER

### LIQUOR

- SMIRNOFF VODKA
- BOMBAY SAPPHIRE LONDON DRY GIN
- GRANTS SCOTCH
- APPLETON ESTATE RUM
- FORTY CREEK BARREL SELECT WHISKY

### WINE

- INNISKILLIN CHARDONNAY
- INNISKILLIN CABERNET MERLOT





# Preferred Caterers

LISTED ALPHABETICALLY



## AUNTY'S KITCHEN حلال

- ZUBAIR@AUNTYSKITCHEN.CA | 226-929-5903
- WWW.AUNTYSKITCHEN.CA



## CATCH CATERING حلال

- INFO@CATCHCATERING.CA | 905-469-1538
- WWW.CATCHCATERING.CA



## CATERING BY GREGORY'S حلال

- CATERING@GREGORYS.CA | 905-454-8738
- WWW.GREGORYS.CA



## FEAST YOUR EYES INC حلال

- INFO@FEASTYOUREYES.CA | 905-454-0159
- WWW.FEASTYOUREYES.CA



## FEED ME FINE FOODS حلال

- KIREKUVAR@GMAIL.COM | 647-999-6974
- WWW.INSTAGRAM.COM/FEEDMEFINEFOODS



## MILLCROFT CATERING حلال

- TARA@MILLCROFTCATERING.CA | 905-332-5111 EXT.34
- WWW.MILLCROFTCATERING.CA



## NOBLE CATERING حلال

- ORDERS@NOBLECATERING.CA | 905-849-6416
- WWW.NOBLECATERING.CA



## ON THE MOVE CATERING حلال

- INFO@OTM.CA | 905-615-9957
- WWW.OTM.CA



## PARLATO'S CATERING

- HELLO@PARLATOSCATERING.COM | 905-465-2653
- WWW.PARLATOSCATERING.COM



## PIG ROAST CATERING

- INFO@PIGROASTCATERING.CA | 416-938-4853
- WWW.PIGROASTCATERING.CA



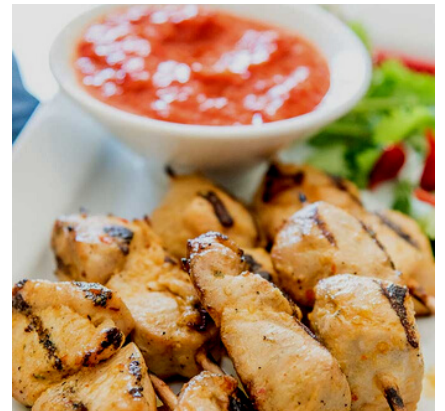
## WARRAICH GROUP حلال

- INFO@WARRAICHGROUP.COM | 416-417-0800
- WWW.WARRAICHMEATS.COM



## ZAUQ CATERING حلال

- INFO@ZAUQ.CA | 905-625-7786
- WWW.ZAUQ.CA



WE REQUIRE OUR CLIENTS TO BOOK WITH ONE OF OUR PREFERRED CATERERS.

# Recommended Vendors

LISTED ALPHABETICALLY



## DECORATORS

### BLOOMING DECOR

- KRISTIE@MILLCROFTCATERING.CA | 905-332-5111 EXT.34
- WWW.MILLCROFTCATERING.CA

### DESIGN MANTRA

- INFO@DESIGNMANTRAA.CA | 647-998-7527
- WWW.DESIGNMANTRAA.CA

### DECOR BY RB

- DECORBYRB@GMAIL.COM | 647-768-2152
- WWW.INSTAGRAM.COM/DECORBYRB\_

### FEAST YOUR EYES EVENT DECOR

- INFO@FEASTYOUREYES.CA | 905-454-0159
- WWW.FEASTYOUREYES.CA

### LACE & BIRCH

- INFO@LACEANDBIRCH.COM | 905-690-1414
- WWW.LACEANDBIRCH.COM

### PARAS EVENTS & DECOR

- INFO@PARASEVENTS.CA | 416-857-0117
- WWW.PARASEVENTS.CA

### SIGNATURE WEDDINGS BY LISA

- LISA@SIGNATUREWEDDINGSBYLISA.CA | 519-835-1317
- WWW.SIGNATUREWEDDINGSBYLISA.CA

### TED.CO

- INFO@THEEVENTDECORCOMPANY.COM | 416-799-9799
- WWW.THEEVENTDECORCOMPANY.COM

### WITH ALL MY HEART WEDDING DECOR INC

- INFO@WITHALLMYHEARTWEDDINGDECOR.CA | 905-639-9600
- WWW.WITHALLMYHEARTWEDDINGDECOR.CA

## FLORISTS

### BUSINESS IS BLOOMING

- INFO@BUSINESSISBLOOMING.CA | 905-693-6437
- WWW.BUSINESSISBLOOMING.CA

### LACE & BIRCH

- INFO@LACEANDBIRCH | 905-690-1414
- WWW.LACEANDBIRCH.COM

### PINK PAMPLEMOUSSE FLORAL STUDIO

- HELLO@PINKPAMPLEMOUSSE.CO | 416-831-7143
- WWW.PINKPAMPLEMOUSSE.CO

### THE PAISLEY ROSE

- THEPAISLEYROSEFLOWERS@GMAIL.COM
- WWW.THEPAISLEYROSE.CA

## WEDDING STATIONARY

### LOGIE PAPERIE

- INFO@LOGIEPAPERIE.COM | 519-717-9480
- WWW.LOGIEPAPERIE.COM

## OFFICIANTS

### ALL SEASONS WEDDINGS

- INFO@ALLSEASONSWEDDINGS.COM | 1-800-545-3681
- WWW.ALLSEASONSWEDDINGS.COM

### MARILYN ALLINGTON WEDDING OFFICIANT

- MARILYNALLINGTON@GMAIL.COM | 905-483-1195
- HTTPS://MARILYNALLINGTON.VPWEB.CA





# Recommended Vendors



## PHOTOGRAPHERS

### AMY SUE BRANT-PORTRAIT ARTISTRY

- [INFO@AMYSUEBRANT.COM](mailto:INFO@AMYSUEBRANT.COM) | 647-999-7816
- [WWW.AMYSUEBRANT.COM](http://WWW.AMYSUEBRANT.COM)

### PHOTOWORKS

- [MATTHEW@PHOTOSTHATWORK.COM](mailto:MATTHEW@PHOTOSTHATWORK.COM) | 416-890-78866
- [WWW.PHOTOSTHATWORK.COM/PHOTOWORKS/](http://WWW.PHOTOSTHATWORK.COM/PHOTOWORKS/)

### RED MANGO PHOTOGRAPHY

- [INFO@REDMANGOPHOTOGRAPHY.COM](mailto:INFO@REDMANGOPHOTOGRAPHY.COM) | 647-606-7668
- [WWW.REDMANGOPHOTOGRAPHY.COM](http://WWW.REDMANGOPHOTOGRAPHY.COM)

## DJ SERVICES

### FIRST CLASS ENTERTAINMENT

- [FCE@ROGERS.COM](mailto:FCE@ROGERS.COM) | 416-617-9287
- [WWW.FIRSTCLASSENTERTAINMENT.CA](http://WWW.FIRSTCLASSENTERTAINMENT.CA)

### THE SOUNDS

- [INFO@SOUNDSDJ.CA](mailto:INFO@SOUNDSDJ.CA) | 905-630-6616
- [WWW.SOUNDSDJEVENTS.CA](http://WWW.SOUNDSDJEVENTS.CA)

### ST. ROYAL ENTERTAINMENT

- [HELLO@STROYAL.COM](mailto:HELLO@STROYAL.COM) | 1-844-787-6925
- [WWW.STROYALENTERTAINMENT.COM](http://WWW.STROYALENTERTAINMENT.COM)

## CAKES AND DESSERTS

### CRAZY GOOD CAKES

- [KIM@CRAZYGOODCAKES.CA](mailto:KIM@CRAZYGOODCAKES.CA) | 416-771-9389
- [WWW.CRAZYGOODCAKES.CA](http://WWW.CRAZYGOODCAKES.CA)

### LA ROSE

- 905-875-0303
- [WWW.LAROSEBAKERY.COM](http://WWW.LAROSEBAKERY.COM)

## WEDDING PLANNERS

### WEDDINGS AND EVENTS BY ANGELA

- [WEDDINGSANDEVENTSBYANGELA@GMAIL.COM](mailto:WEDDINGSANDEVENTSBYANGELA@GMAIL.COM)
- ANGELA CLARINO; 416-877-4528
- [WWW.ANGELACLARINO.WIXSITE.COM/WEDDINGPLANNER](http://WWW.ANGELACLARINO.WIXSITE.COM/WEDDINGPLANNER)

### WESTVIEW EVENTS AND FLORALS

- [INFO@WESTVIEWEVENTS.COM](mailto:INFO@WESTVIEWEVENTS.COM) | 905-407-5813
- [WWW.WESTVIEWEVENTS.COM](http://WWW.WESTVIEWEVENTS.COM)

## ENTERTAINMENT

### SNAPTIQUE

- [INFO@SNAPTIQUE.CA](mailto:INFO@SNAPTIQUE.CA) | 647-405-7938
- [WWW.SNAPTIQUE.CA](http://WWW.SNAPTIQUE.CA)

### URBAN COWBOY LINE DANCING

- [INFO@URBANCOWBOYLD.COM](mailto:INFO@URBANCOWBOYLD.COM) | 905-699-2828
- [WWW.URBANCOWBOYLD.COM](http://WWW.URBANCOWBOYLD.COM)

## EVENT RENTALS

### MCLEAN SHERWOOD EVENT RENTALS

- [INFO@MCLEANSHERWOOD.COM](mailto:INFO@MCLEANSHERWOOD.COM) | 905-459-5781
- [WWW.MCLEANSHERWOOD.COM](http://WWW.MCLEANSHERWOOD.COM)

## VINYL FLOOR WRAPS

### NORTH FLOOR DESIGNS

- [NORTHFLOOREVENTS@HOTMAIL.COM](mailto:NORTHFLOOREVENTS@HOTMAIL.COM) | 416-708-1100
- [WWW.INSTAGRAM.COM/NORTHFLOORDESIGN](http://WWW.INSTAGRAM.COM/NORTHFLOORDESIGN)

## HORSE & CARRIAGE/BARAAT HORSES

### PONIES R US

- [INFO@THEPONYPEOPLE.COM](mailto:INFO@THEPONYPEOPLE.COM) | 905-854-7669
- [WWW.THEPONYPEOPLE.COM](http://WWW.THEPONYPEOPLE.COM)



*We're looking forward to being a  
part of your special day!*



@COUNTRYHERITAGEPARK



@COUNTRYHERITAGEPARK



@CHERITAGEPARK



8560 TREMAINE RD, MILTON, ON, L9T 2X3 | 905-878-8151

EVENTS@COUNTRYHERITAGEPARK.COM | WWW.COUNTRYHERITAGEPARK.COM