

Co-op Opportunities at Country Heritage Park

What to expect from a co-op
placement with us



About Us

As an Educational Hub grounded in agriculture, we offer many opportunities to learn. Our co-op program is designed to provide students with meaningful hands-on experiences that promote growth, skill development, and career exploration. Through our diverse on-site facilities and expert mentorship, students will gain valuable knowledge and practical experience that they can carry forward in their education and careers.

Our goal is to create an engaging, dynamic learning environment where students not only develop essential skills but also discover new interests and potential career paths. Whether they are passionate about agriculture, animal care, education, graphic design, or gardening, our program offers a variety of opportunities for them to explore and grow.

Our Program Structure

Who Might be Interested in a Co-op Program at CHP?

Students seeking a broad range of practical skills for adulthood

Those who may struggle in traditional school settings & are looking to develop diverse, transferable skills in different fields.

Students who are interested in agriculture and outdoor work

Those looking to gain hands-on experience in farming, horticulture, animal care, and sustainable food production.

Rather than limiting students to a single role, our program rotates participants through various learning areas, allowing them to gain exposure to multiple disciplines and work alongside experienced mentors in different fields.

Our Learning Areas



Animal Care

Students will assist in caring for farm animals under the supervision of our animal caretaker. Responsibilities include:

Basic Animal Care – Ensuring animals are properly fed, have water, and have been attended to in any way required.

Animal Wellness – Learning basic animal husbandry and keeping an eye on animal health for any signs of discomfort or sickness

Barn & Pen Care – Making sure animal stalls and living spaces are clean, prepared, have fresh bedding and are hazard-free. Includes making sure the barn itself is clean and all waste & hazards are removed.

Hive Maintenance – May assist others with intermittent hive care for on-site beehives, including winterization, pest management, and general health monitoring.

Animal Products – Properly handling and preparing any animal products produced such as honey or wool.



Our Learning Areas



Education

Students will support our educators in delivering interactive programs to visiting elementary school students.

Responsibilities include:

Program Preparation – Organizing materials, locations and assembling kits for student activities

Assisting with Lessons – Shadowing educators, learning how to teach topics such as early settler life, sustainability, and ecosystems.

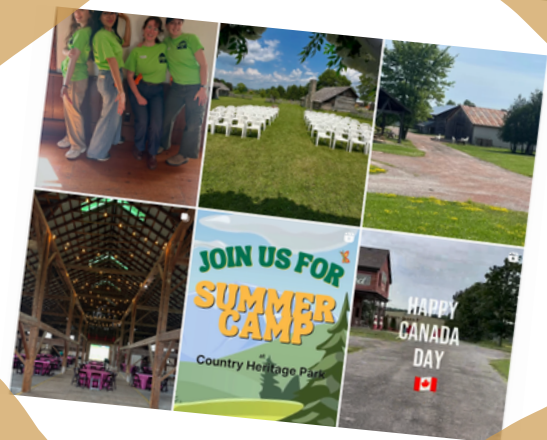
Facilitating Activities – Helping with hands-on experiences, including blacksmithing, outdoor games, and wagon rides.

Social Media & Graphic Design

Students can gain experience in graphic design & marketing here at the park by assisting with the CHP social media pages:

Taking Photos – Using photography & videography equipment to capture key moments at the park including programs, events & daily operations

Social Media Support – Creating engaging social media posts using a mix of photography, canva graphics and videos on apps such as Facebook & Instagram



Our Learning Areas



Agriculture

Students will work alongside our horticulturist & outdoor staff to create and maintain outdoor crop spaces, including:

Field & Planting Prep – Preparing fields for planting. Could include inserting stakes, creating trellises, weeding, stone removal and tilling.

Planting & Crop Care – Starting seeds indoors or outdoors, as well as transplanting seedlings into larger fields. Caring for crops by watering them, weeding overgrown areas and checking for pests.

Crop Harvest – Harvesting fruit, vegetables and herbs from mature plants, as well as removing plants at the end of the season.

Landscaping & Horticulture

Students will work alongside our horticulturist to maintain gardens and outdoor spaces. Learning opportunities include:

Planting – Seeding and transplanting crops and flowers for display gardens and food production.

Garden Maintenance – Weeding, pruning, edging, and watering, along with identifying plant health issues.

Landscape Maintenance – Learning to use a variety of outdoor equipment including zero turn mowers & line trimmers, as well as keeping our outdoor spaces clean & garbage-free!



Our Learning Areas



Aquaponics

In our indoor growing systems, students will learn innovative techniques for sustainable food production. Key areas include:

Hydroponic & Aquaponic Crop Care – Planting and maintaining crops in indoor systems.

System Maintenance – Cleaning and monitoring water levels and system health.

Fish Care – Assisting with feeding and basic fish health monitoring.

Harvesting – Collecting produce and maintaining system organization.

Events Management

Students will gain experience in event planning and execution by assisting our events team.

Responsibilities include:

Event Set-Up – Arranging tables, chairs, and equipment according to event layouts

Guest Assistance – Answering basic inquiries and helping ensure smooth event operations.

Inventory Management – Ensuring that all events inventory is up to date, damages are accounted for and materials stay filled.



Our Learning Areas



Maintenance & Upkeep

Students will work with our on-site maintenance staff to learn essential skills in facility upkeep. Key learning experiences include:

Vehicle Maintenance – Basic upkeep of park vehicles, including seasonal preparations, tire changes, oil changes, and general repairs.

Tool & Equipment Maintenance – Hands-on experience with landscaping tools, line trimmers, blowers, and other essential park maintenance equipment.

Building Repairs – Learning how to perform minor building repairs, such as installing whiteboards, fixing drains, and addressing general maintenance needs.

Waste Management – Collecting garbage, cardboard, and compost for proper disposal

Cleaning & Organization – Sweeping, mopping, and maintaining clean workspaces as well as ensuring all areas of the park are prepared for use.

Inventory Management – Assisting in tracking supplies for education programs, office needs, and animal care.

Grounds Repairs & Maintenance – Assisting maintenance staff in road upkeep, ditch maintenance, keeping weeds down in areas with heavy foot traffic & ensuring areas have proper signage and barriers when required.





Contact Us!

If you're ready to *dig in, learn, & grow* with us, we'd love to hear from you!

Please contact our Co-op Placement Coordinator for inquiries:

Kaleigh Lozon

*Volunteer & Co-op Coordinator,
Horticulturist*

kaleigh@countryheritagepark.com
905-878-8151 #4





Thank you!
We hope to
hear from
you soon!

